




OLIVER PUB

TABLE

Oliver is the perfect upscale yet durable table for all your public space furniture needs. Table base and edge is available in powder coated aluminum. The table top slats are made of composite wood. Composite wood is UV resistant and will not gray. It is also extremely resistant to rot, fungal attacks, and even termites. Unlike wood, composite wood will not develop splinters.



PUB DINING TABLES

- Oliver Pub is available as a freestanding or surface mounted piece.
- Oliver Pub is available in dining, counter, or bar height.
- The table is constructed of aluminum with a 1.75"H composite wood slatted top.
- Recyclable. 

FINISHES

- Base and edge band: powder coated aluminum - standard RAL colors apply
- Table top slats - standard composite wood finishes apply
- Visit benchmarkcontractfurniture.com for color charts.

MAINTENANCE

- Metal and composite wood surfaces can be cleaned as needed using a soft cloth with warm water and a mild detergent. Avoid abrasive cleaners.

NOMINAL DIMENSIONS

STYLE	MODEL	DEPTH	WIDTH	HEIGHT
	14652-24D	24"	24"	30"
	14652-30D	30"	30"	30"
	14652-36D	36"	36"	30"
	14652-42D	42"	42"	30"
	14652-2424D	24"	24"	30"
	14652-3030D	30"	30"	30"
	14652-3636D	36"	36"	30"
	14652-4242D	42"	42"	30"
	14652-2430D	24"	30"	30"
	14652-3048D	30"	48"	30"

FREESTANDING TABLES

Visit benchmarkcontractfurniture.com for more information. Specifications are subject to change without notice.

Benchmark Contract Furniture | 904.246.5060 | F 904.246.9008 | 456 Osceola Avenue Jacksonville Beach, FL

32250




OLIVER PUB

TABLE

Oliver is the perfect upscale yet durable table for all your public space furniture needs. Table base and edge is available in powder coated aluminum. The table top slats are made of composite wood. Composite wood is UV resistant and will not gray. It is also extremely resistant to rot, fungal attacks, and even termites. Unlike wood, composite wood will not develop splinters.



PUB DINING TABLES

- Oliver Pub is available as a freestanding or surface mounted piece.
- Oliver Pub is available in dining, counter, or bar height.
- The table is constructed of aluminum with a 1.75"H composite wood slatted top.
- Recyclable. 

FINISHES

- Base and edge band: powder coated aluminum - standard RAL colors apply
- Table top slats - standard composite wood finishes apply
- Visit benchmarkcontractfurniture.com for color charts.

MAINTENANCE

- Metal and composite wood surfaces can be cleaned as needed using a soft cloth with warm water and a mild detergent. Avoid abrasive cleaners.

NOMINAL DIMENSIONS

STYLE	MODEL	DEPTH	WIDTH	HEIGHT
	14653-24D	24"	24"	30"
	14653-30D	30"	30"	30"
	14653-36D	36"	36"	30"
	14653-42D	42"	42"	30"
	14653-2424D	24"	24"	30"
	14653-3030D	30"	30"	30"
	14653-3636D	36"	36"	30"
	14653-4242D	42"	42"	30"
	14653-2430D	24"	30"	30"
	14653-3048D	30"	48"	30"

SURFACE MOUNTED TABLES

Visit benchmarkcontractfurniture.com for more information. Specifications are subject to change without notice.




OLIVER PUB

TABLE

Oliver is the perfect upscale yet durable table for all your public space furniture needs. Table base and edge is available in powder coated aluminum. The table top slats are made of composite wood. Composite wood is UV resistant and will not gray. It is also extremely resistant to rot, fungal attacks, and even termites. Unlike wood, composite wood will not develop splinters.



PUB COUNTER TABLES

- Oliver Pub is available as a freestanding or surface mounted piece.
- Oliver Pub is available in dining, counter, or bar height.
- The table is constructed of aluminum with a 1.75"H composite wood slatted top.
- Recyclable. 

FINISHES

- Base and edge band: powder coated aluminum - standard RAL colors apply
- Table top slats - standard composite wood finishes apply
- Visit benchmarkcontractfurniture.com for color charts.

MAINTENANCE

- Metal and composite wood surfaces can be cleaned as needed using a soft cloth with warm water and a mild detergent. Avoid abrasive cleaners.

NOMINAL DIMENSIONS

STYLE	MODEL	DEPTH	WIDTH	HEIGHT
	14652-24C	24"	24"	36"
	14652-30C	30"	30"	36"
	14652-36C	36"	36"	36"
	14652-42C	42"	42"	36"
	14652-2424C	24"	24"	36"
	14652-3030C	30"	30"	36"
	14652-3636C	36"	36"	36"
	14652-4242C	42"	42"	36"
	14652-2430C	24"	30"	36"
	14652-3048C	30"	48"	36"

FREESTANDING TABLES

Visit benchmarkcontractfurniture.com for more information. Specifications are subject to change without notice.




OLIVER PUB

TABLE

Oliver is the perfect upscale yet durable table for all your public space furniture needs. Table base and edge is available in powder coated aluminum. The table top slats are made of composite wood. Composite wood is UV resistant and will not gray. It is also extremely resistant to rot, fungal attacks, and even termites. Unlike wood, composite wood will not develop splinters.



PUB COUNTER TABLES

- Oliver Pub is available as a freestanding or surface mounted piece.
- Oliver Pub is available in dining, counter, or bar height.
- The table is constructed of aluminum with a 1.75"H composite wood slatted top.
- Recyclable. 

FINISHES

- Base and edge band: powder coated aluminum - standard RAL colors apply
- Table top slats - standard composite wood finishes apply
- Visit benchmarkcontractfurniture.com for color charts.

MAINTENANCE

- Metal and composite wood surfaces can be cleaned as needed using a soft cloth with warm water and a mild detergent. Avoid abrasive cleaners.

NOMINAL DIMENSIONS

STYLE	MODEL	DEPTH	WIDTH	HEIGHT
	14653-24C	24"	24"	36"
	14653-30C	30"	30"	36"
	14653-36C	36"	36"	36"
	14653-42C	42"	42"	36"
	14653-2424C	24"	24"	36"
	14653-3030C	30"	30"	36"
	14653-3636C	36"	36"	36"
	14653-4242C	42"	42"	36"
	14653-2430C	24"	30"	36"
	14653-3048C	30"	48"	36"

SURFACE MOUNTED TABLES

Visit benchmarkcontractfurniture.com for more information. Specifications are subject to change without notice.




OLIVER PUB

TABLE

Oliver is the perfect upscale yet durable table for all your public space furniture needs. Table base and edge is available in powder coated aluminum. The table top slats are made of composite wood. Composite wood is UV resistant and will not gray. It is also extremely resistant to rot, fungal attacks, and even termites. Unlike wood, composite wood will not develop splinters.



PUB BAR TABLES

- Oliver Pub is available as a freestanding or surface mounted piece.
- Oliver Pub is available in dining, counter, or bar height.
- The table is constructed of aluminum with a 1.75"H composite wood slatted top.
- Recyclable. 

FINISHES

- Base and edge band: powder coated aluminum - standard RAL colors apply
- Table top slats - standard composite wood finishes apply
- Visit benchmarkcontractfurniture.com for color charts.

MAINTENANCE

- Metal and composite wood surfaces can be cleaned as needed using a soft cloth with warm water and a mild detergent. Avoid abrasive cleaners.

NOMINAL DIMENSIONS

STYLE	MODEL	DEPTH	WIDTH	HEIGHT
	14652-24B	24"	24"	42"
	14652-30B	30"	30"	42"
	14652-36B	36"	36"	42"
	14652-42B	42"	42"	42"
	14652-2424B	24"	24"	42"
	14652-3030B	30"	30"	42"
	14652-3636B	36"	36"	42"
	14652-4242B	42"	42"	42"
	14652-2430B	24"	30"	42"
	14652-3048B	30"	48"	42"

FREESTANDING TABLES

Visit benchmarkcontractfurniture.com for more information. Specifications are subject to change without notice.

Benchmark Contract Furniture | 904.246.5060 | F 904.246.9008 | 456 Osceola Avenue Jacksonville Beach, FL

32250




OLIVER PUB

TABLE

Oliver is the perfect upscale yet durable table for all your public space furniture needs. Table base and edge is available in powder coated aluminum. The table top slats are made of composite wood. Composite wood is UV resistant and will not gray. It is also extremely resistant to rot, fungal attacks, and even termites. Unlike wood, composite wood will not develop splinters.



PUB BAR TABLES

- Oliver Pub is available as a freestanding or surface mounted piece.
- Oliver Pub is available in dining, counter, or bar height.
- The table is constructed of aluminum with a 1.75"H composite wood slatted top.
- Recyclable. 

FINISHES

- Base and edge band: powder coated aluminum - standard RAL colors apply
- Table top slats - standard composite wood finishes apply
- Visit benchmarkcontractfurniture.com for color charts.

MAINTENANCE

- Metal and composite wood surfaces can be cleaned as needed using a soft cloth with warm water and a mild detergent. Avoid abrasive cleaners.

NOMINAL DIMENSIONS

STYLE	MODEL	DEPTH	WIDTH	HEIGHT
	14653-24B	24"	24"	42"
	14653-30B	30"	30"	42"
	14653-36B	36"	36"	42"
	14653-42B	42"	42"	42"
	14653-2424B	24"	24"	42"
	14653-3030B	30"	30"	42"
	14653-3636B	36"	36"	42"
	14653-4242B	42"	42"	42"
	14653-2430B	24"	30"	42"
	14653-3048B	30"	48"	42"

SURFACE MOUNTED TABLES

Visit benchmarkcontractfurniture.com for more information. Specifications are subject to change without notice.



OLIVER PUB TABLE

Oliver is the perfect upscale yet durable table for all your public space furniture needs. Table base and edge is available in powder coated aluminum. The table top slates are made of composite wood. Composite wood is UV resistant and will not gray. It is also extremely resistant to rot, fungal attacks, and even termites. Unlike wood, composite wood will not develop splinters.

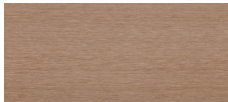


COMPOSITE WOOD LOOK OPTIONS

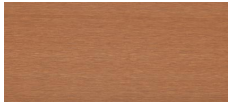
C-42, CAPE COD



C-23, AGED TEAK



C-24, JAVA



C-51, WALNUT



C-08, BURMA



C-14, SIAM

