




NANTUCKET

PICNIC TABLE

Perfect for creating impromptu dining, the Nantucket Picnic Table offers the warmth of wood options and an option with the look of wood without the extra maintenance. Nantucket adds comfort and style to any outdoor dining area. This table frame is made from aluminum and is durable for a commercial environment.



PICNIC TABLE

- Table is constructed with an aluminum frame.
- Table and seat slats available in Teak, Jatoba, or composite wood look.
- Freestanding or surface-mounted.
- Recyclable. 


FINISHES

- Frame: powder coated aluminum - standard RAL colors apply.
- Tabletop and seats: available in Teak with exterior oil, Jatoba with exterior oil, or composite wood look - standard finishes apply.
- Visit benchmarkcontractfurniture.com for color charts.

MAINTENANCE

- Metal and wood surfaces can be cleaned as needed using a soft cloth with warm water and a mild detergent. Avoid abrasive cleaners.
- Recommended: light sand Jatoba and Teak yearly and reapply exterior oil finish. If this maintenance is not completed the wood will eventually weather to a grey finish.

NOMINAL DIMENSIONS

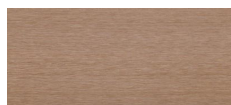
	STYLE	MODEL	DEPTH	WIDTH	HEIGHT	SEAT HEIGHT
Picnic Table		13860	70"	64"	32"	16"

COMPOSITE WOOD LOOK OPTIONS

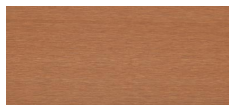
C-42, CAPE COD



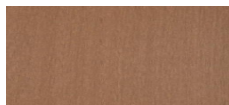
C-23, AGED TEAK



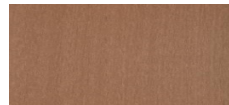
C-24, JAVA



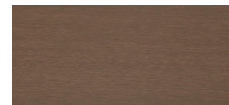
C-51, WALNUT



C-08, BURMA

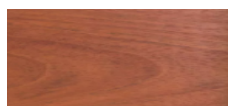


C-14, SIAM



WOOD OPTIONS

JATOBA



TEAK

