


A versatile, modular bench system designed for both interior and exterior high traffic use. The clean lines and flexibility of this collection allow you to customize to your specific design needs. Garda is available in a powder coated aluminum frame with either composite wood, sublimated, or Jatoba wood slats.



STOOLS

- Available with Composite Wood, Sublimated Wood or Jatoba Wood slats.
- The frame is constructed of aluminum.
- Recyclable. 





FINISHES

- Frame: powder coated aluminum - standard RAL colors apply
- Slats: available in Jatoba, sublimation, or composite wood - standard colors apply.
- Visit benchmarkcontractfurniture.com for color charts.

MAINTENANCE

- Metal and wood surfaces can be cleaned as needed using a soft cloth with warm water and a mild detergent. Avoid abrasive cleaners.
- Recommended: light sand Jatoba yearly and reapply exterior oil finish. If this maintenance is not completed the wood will eventually weather to a grey finish.

NOMINAL DIMENSIONS

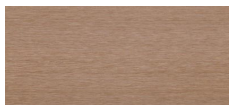
	STYLE	MODEL	DEPTH	WIDTH	HEIGHT
Leviosa Backless Bar Stool		11746-AL5	20"	20"	29.5"
Leviosa Bar Stool		11740-AL5	20"	25"	45"
Leviosa Dining Stool		11744-AL5	20"	20"	17.5"
Garda Dining Stool		11747-AL5	18"	18"	17.5"

COMPOSITE WOOD LOOK OPTIONS

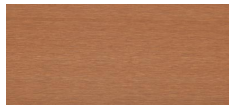
C-42, CAPE COD



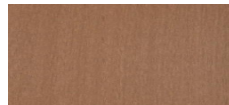
C-23, AGED TEAK



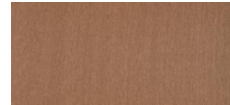
C-24, JAVA



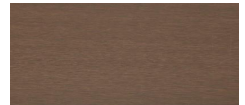
C-51, WALNUT



C-08, BURMA

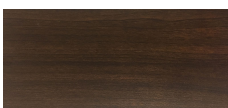


C-14, SIAM



SUBLIMATION OPTIONS

NATIONAL WALNUT



ASH



EUROPEAN CHERRY



MEDITERRANEAN CHERRY



WOOD OPTIONS

JATOBA

