

A versatile, modular bench system designed for both interior and exterior high traffic use. The clean lines and flexibility of this collection allow you to customize to your specific design needs. Garda is available in a powder coated aluminum frame with either composite wood, sublimated, or Jatoba wood slats.



BACKED BENCHES

- Garda Bench is a freestanding piece. May also be surface mounted (must specify on purchase order).

- Available with Composite Wood, Sublimated Wood or Jatoba Wood slats.

- The frame is constructed of aluminum.

- Recyclable. 

FINISHES

- Frame: powder coated aluminum - standard RAL colors apply

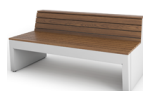
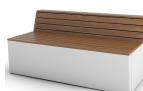


- Slats: available in Jatoba, sublimation, or composite wood - standard colors apply.

- Visit benchmarkcontractfurniture.com for color charts.

MAINTENANCE

- Metal and wood surfaces can be cleaned as needed using a soft cloth with warm water and a mild detergent. Avoid abrasive cleaners.
- Recommended: light sand Jatoba yearly and reapply exterior oil finish. If this maintenance is not completed the wood will eventually weather to a grey finish.

NOMINAL DIMENSIONS

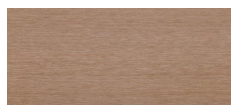
	E	DE	DE	D	E
Liber Backed Bench		14213-AL5	30"	60"	28"
Backed Bench		14210-AL5	30"	60"	28"
High-Back Liber Bench		14218-AL5	30"	60"	47.5"
High-Back Bench		14219-AL5	30"	60"	47.5"

COMPOSITE WOOD LOOK OPTIONS

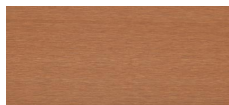
C-42, CAPE COD



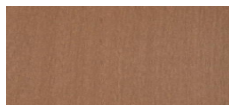
C-23, AGED TEAK



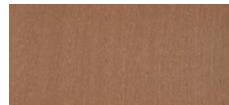
C-24, JAVA



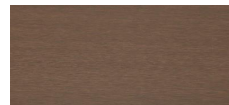
C-51, WALNUT



C-08, BURMA

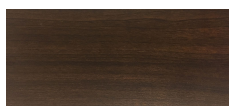


C-14, SIAM



SUBLIMATION OPTIONS

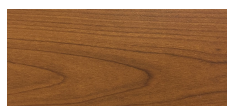
NATIONAL WALNUT



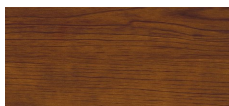
ASH



EUROPEAN CHERRY

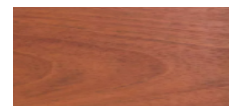


MEDITERRANEAN CHERRY

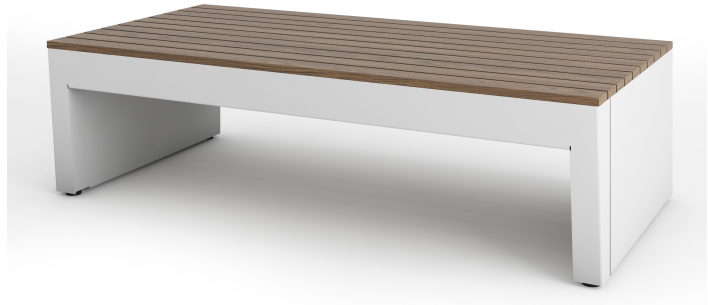


WOOD OPTIONS


JATOBA



A versatile, modular bench system designed for both interior and exterior high traffic use. The clean lines and flexibility of this collection allow you to customize to your specific design needs. Garda is available in a powder coated aluminum frame with either composite wood, sublimated, or Jatoba wood slats.



BACKLESS BENCHES

- Garda Bench is a freestanding piece. May also be surface mounted (must specify on purchase order).
- Available with Composite Wood, Sublimated Wood or Jatoba Wood slats.
- The frame is constructed of aluminum.
- Recyclable. 

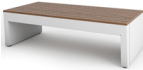
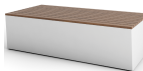
FINISHES

- Frame: powder coated aluminum - standard RAL colors apply
- Slats: available in Jatoba, sublimation, or composite wood - standard colors apply.
- Visit benchmarkcontractfurniture.com for color charts.

MAINTENANCE

- Metal and wood surfaces can be cleaned as needed using a soft cloth with warm water and a mild detergent. Avoid abrasive cleaners.
- Recommended: light sand Jatoba yearly and reapply exterior oil finish. If this maintenance is not completed the wood will eventually weather to a grey finish.

NOMINAL DIMENSIONS

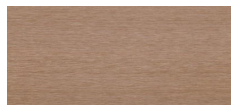
	STYLE	MODEL	DEPTH	WIDTH	HEIGHT
Liber Backless Bench		14212-AL5	30"	60"	17"
		14209-AL5	30"	60"	17"

COMPOSITE WOOD LOOK OPTIONS

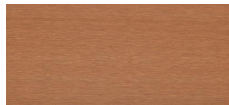
C-42, CAPE COD



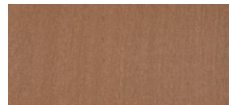
C-23, AGED TEAK



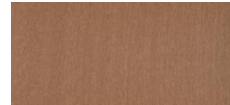
C-24, JAVA



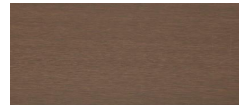
C-51, WALNUT



C-08, BURMA

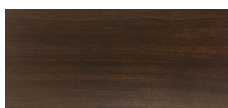


C-14, SIAM



SUBLIMATION OPTIONS

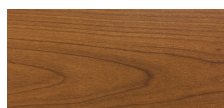
NATIONAL WALNUT



ASH



EUROPEAN CHERRY



MEDITERRANEAN CHERRY



WOOD OPTIONS

JATOBA

