



# SOPHISTICATED

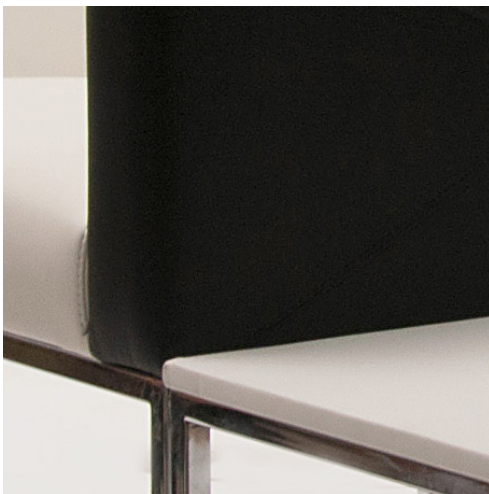
The clean lines and modern design makes the Cubix Collection ideal for multi use, public applications.





# UNIQUE

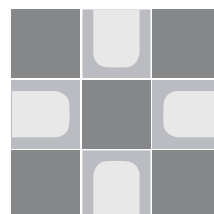
Pieces in this collection can be used alone or brought together for stunning modular layouts in any space.





VERSATILE | SLEEK





# CUBIX

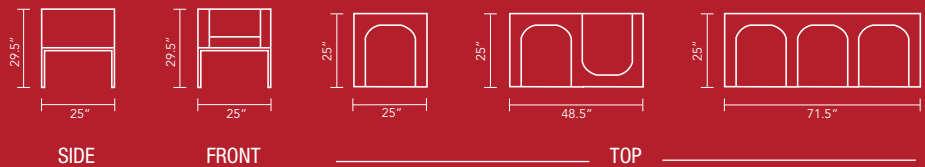
## STANDARD FEATURES:

- Welded tubular steel frame
- Seat and sides in high density polyurethane foam
- COM - Vinyl, fabric or leather
- Brushed or polished chrome frame
- Corian solid surfaces

## OPTIONS:

- Ganging kit
- 3/4" natural stone or man-made solid surface table top
- Vinyl or leather table top

SEATING #9492-AL5 (SINGLE SEAT), #9494-AL5 (TWO-SEAT), #9496-AL5 (THREE-SEAT)



BENCH #9498-AL5 (SINGLE), #9502-AL5 (DOUBLE)

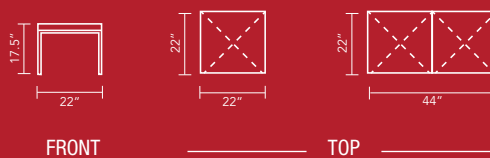
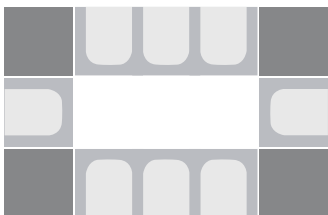
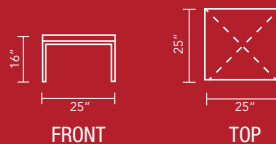


TABLE #9505-AL5





# CUBIX

DESIGNED BY: ANTONIO LAROSA



[BENCHMARKCONTRACTFURNITURE.COM](http://BENCHMARKCONTRACTFURNITURE.COM)

456 Osceola Avenue • Jacksonville Beach, FL 32250 • P 904.246.5060 • F 904.246.9008

