

A uniquely clean, sleek, and contemporary look combined with commercial grade durability make Sierra a perfect choice for your outdoor space.



UMBRELLA

- Sierra is a full-length solid ash pole laminated for strength and protection against warping. It is reinforced with a steel rod.

- 6' umbrella standard with a single vent and 8' umbrella with a double vent rotating canopy.

- Available in 6.5' octagon or an 8' octagon.

- Standard with manual open.

- Hub is multi-laminated with Northern Ash, the hardest wood grown in the US, and reinforced internally with stainless steel hardware. Hub design accents strength, keeping the wood girth constant in all weather.



- Stainless fabric-connecting brackets are sealed with clear lacquer. Solid stainless steel grommets and screws attach the fabric. All screws are flush to protect the fabric when the umbrella is closed.

- Heavy, solid brass eye-screw and chain connect the positioning pin.

- Approximate weight – 25 lbs.

- *Base sold separately.

NOMINAL DIMENSIONS

| | STYLE | MODEL | DEPTH | WIDTH | HEIGHT |
|----------|-----------------------------------------------------------------------------------|---------|-------|-------|--------|
| |  | | | | |
| Umbrella | | 17002-6 | 72" | 72" | 103.5" |
| |  | 17002-8 | 96" | 96" | 105.5" |

FINISHES

- Canopy: available in standard 'The Mayfield Collection' Marine Exterior Sunbrella colors – see color chart on page 2 below.

MAINTENANCE

- Metal and wood surfaces can be cleaned as needed using a soft cloth with warm water and a mild detergent. Avoid abrasive cleaners.

- Fabric to be cleaned per manufacturer's cleaning instructions.

WOOD FINISH OPTIONS

TEAK ON ASH



MAHOGANY ON ASH



NATURAL ON ASH



A uniquely clean, sleek, and contemporary look combined with commercial grade durability make Aline a perfect choice for your outdoor space.



SUNBRELLA FABRIC OPTIONS

MARINE BLUE
4678-0000



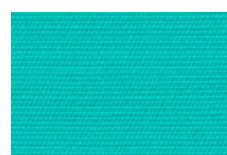
PACIFIC BLUE
4601-0000



AZURE
4669-0000



ARUBA
4612-0000



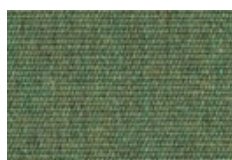
GINGKO
4685-0000



PERSIAN GREEN
4643-0000



FERN
4671-0000



FOREST GREEN
4637-0000



SLATE BLUE
14605-0000



LAPIS
14602-0000



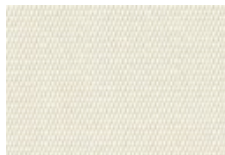
GRAPHITE
14600-0000



NATURAL
14604-0000



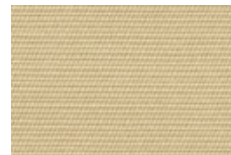
OYSTER
14642-0000



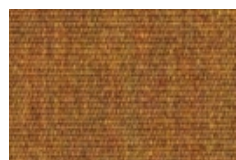
CLOUD
14609-0000



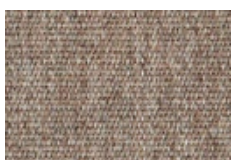
LINEN
14633-0000



TAN
14614-0000



MUSHROOM
14607-0000



SUNFLOWER YELLOW
14602-0000



RUST
14689-0000



JOCKEY RED
14603-0000



PORT
14606-0000



TRESCO CLAY
14698-0000



CHARCOAL TWEED
14607-0000



SILICA SAGE
14896-0000



CREST ASH
14662-0000

